



EVERY DAY
MADE BETTER[®]





YOUR DAILY ROUTINE

With Hot Spring® Spas, every day is a chance to start fresh, with heat that awakens, crystal clear water that invites, and innovation that you can feel—inspiring you to do more, experience more, and live more.

At the end of the day, we'll help you get ready for what's next.

UNLEASH YOUR BEST SELF.™

Get Immersed

Why Hot Spring Spas _____	4
Smarter, Cleaner, Simpler, Better Water _____	10
Spa Collections _____	14
Cold Plunge _____	40
Necessaries® _____	44
The Absolute Best Hot Tub Ownership Experience® _____	48
Specifications _____	50
Warranty _____	58
Collection Comparison _____	59

EVERY DAY MADE BETTER®
SINCE 1977

With over four decades of experience and two million hot tubs sold, Hot Spring® Spas has earned its place as an industry leader by delivering the Absolute Best Hot Tub Ownership Experience® through innovation, uncompromising quality, and a focus on wellness and vitality.

A LEGACY OF INNOVATION

Our promise of Every Day Made Better® begins with thoughtful innovation. In 1977, Hot Spring revolutionized the industry by introducing the first fully insulated spa, complete with underwater lighting and top-loading filters. That commitment continued with breakthroughs like the Moto-Massage® jet, the world's first moving hydrotherapy jet.

Our newest innovation in water care, FreshWater® IQ combines the FreshWater® Salt System, Smart Monitoring, and precision Dosing to help keep spa water clean, clear, and natural-feeling with less work and less worry.

QUALITY YOU CAN COUNT ON

Every Hot Spring spa is engineered to deliver relaxation and vitality for decades to come. Durable construction, meticulous engineering, legendary hydromassage, and leading energy efficiency work together to create a spa experience you can rely on.

It's this commitment to quality that inspires lasting loyalty among Hot Spring owners.

AN INVESTMENT IN WELLNESS

Wellness is at the core of everything we do. Our hot tubs deliver benefits beyond relaxation to provide well-being, stress relief, and vitality. Enjoy the soothing warmth and hydromassage, alone or with friends and family, for a healthier you. Pair a hot tub with the Vigor™ cold plunge and experience the power of contrast therapy to boost energy levels and reduce muscle soreness while building resilience to stress.



WHAT HAPPENS WHEN YOU STEP INTO A HOT SPRING® SPA?

Immerse yourself in the warm water of a Hot Spring spa, and you'll discover that the benefits extend far beyond your time in the water. Soothing heat and targeted hydrotherapy help relax your body, calm your mind, and provide the vitality to Unleash Your Best Self™.



YOU FEEL BETTER ALL OVER

Thoughtfully engineered jets target specific muscle groups from neck and shoulders to back, calves, wrists, and feet, harnessing the combined power of buoyancy, heat, and hydromassage to accelerate recovery and sustain performance. Take recovery further with the Vigor™ cold plunge. Alternating between heat and cold is one of the most effective tools in performance recovery, reducing muscle soreness, sharpening focus, and building the physiological resilience that keeps you moving day after day.



YOU SLEEP DEEPER AND WAKE REFRESHED

An evening soak helps prepare your body for restful sleep. Warm water gently raises your body temperature, encouraging the natural release of melatonin while calming brain activity. As your body and mind relax, it becomes easier to drift into deeper, more restorative sleep so you wake feeling refreshed and prepared for the day ahead.



YOU CONNECT IN MORE MEANINGFUL WAYS

A hot tub invites you to slow down and spend meaningful time with the people who matter most. Without phones, devices, or distractions, conversations flow more easily. Whether you're catching up with friends, spending time with family, or entertaining guests, a Hot Spring spa turns everyday moments into lasting memories.



THE HOT SPRING ADVANTAGE



Better Massage

Smooth, ergonomic seating conforms to your body, perfectly positioning you for maximum stress relief. A variety of jets, including the patented Moto-Massage® DX moving jet, are strategically placed to target muscle groups from neck and shoulders to back, calves, wrists, and feet.

Personalized controls further enhance your experience. The Comfort Control® System lets you fine-tune the mix of air and water, while the SmartJet® System lets you customize water flow to different jet groups and seats.

Better Water

Your best hot tub experience begins with pure, crystal clear water that looks and smells fresh, each and every time.

Hot Spring spas feature innovative, low maintenance filtration that effectively removes impurities to accessories that reduce contaminants so you can spend more time enjoying your spa and less time maintaining it.

The ground-breaking FreshWater® IQ System, regularly tests spa water, displays clear guidance, and, with a touch, dispenses the right amount of pH Up, pH Down, and Phosphate Remover to keep your water balanced, helping you enjoy better soaks with less effort.

Better Energy

Every component of our Energy Smart® System is designed to work together to ensure your spa is always hot and ready while keeping energy costs low.

With features like high-density insulation that locks in heat; our SilentFlo 5000® Circulation Pump that uses less energy than a 40-watt light bulb; a patented pump shroud that recycles heat to reduce energy consumption; and a custom-fit WeatherPro™ cover with an exclusive hinge seal, all Hot Spring spa models meet or exceed stringent California Energy Commission (CEC) and APSP 14 energy efficiency standards for portable spas.

MONTHLY COST ESTIMATES

Rate x Kilowatt Hour

City	Temp	kWh	Rate	Cost
Miami, FL	75 °F / 23 °C	100	\$0.14	\$14.00
Las Vegas, NV	70 °F / 21 °C	122	\$0.14	\$17.08
Tulsa, OK	60 °F / 15 °C	166	\$0.12	\$19.92
Seattle, WA	55 °F / 12 °C	188	\$0.13	\$24.44
Chicago, IL	50 °F / 10 °C	210	\$0.14	\$29.40
Calgary, Canada*	40 °F / 4 °C	253	\$0.12	\$30.36

Temp: Approximate annual mean ambient temperature
 kWh: Approximate average kilowatt hours per month to operate spa**
 Rate: Approximate average rate charged per kilowatt hour in dollars***
 Cost: Approximate average monthly energy cost to operate spa**

* In Canadian dollars; based on average rates from the Office of the Utilities Consumer Advocate (UCA), April 2026.

** Based on a medium-sized Highlife Collection spa set at 102 °F used six times per week – 15 minutes with jets on and 15 minutes with jets off during each use. Testing conducted by independent third-party certified laboratory in a controlled environmental chamber at multiple ambient temperatures using continuous data acquisition monitoring of watts, temperature and humidity, with all equipment calibrated to ensure data accuracy. Individual energy consumption will vary depending on set water temperature, actual consumer usage patterns, and actual environmental ambient conditions.

*** Based on rates from the Energy Sage, April 2026. Rates subject to change. Check with your local electricity provider for your current rate.

LIQUID JUST GOT SMARTER

Experience the most intelligent salt system on the planet, now with precision Dosing.

FreshWater IQ is a smart, fully integrated water care system that regularly monitors your spa water and displays clear instructions to help you maintain clear, natural-feeling water. With a tap, our new precision Dosing system dispenses the right amount of pH Up, pH Down, or Phosphate Remover, delivering crystal-clear, soak-worthy spa water with less effort.

freshwater® IQ

Smarter

REAL TIME MONITORING. PRECISION DOSING.

FreshWater IQ uses built-in logic to monitor your water's pH, chlorine, and salt levels hourly, and delivers clear, step-by-step instructions right to your spa's touchscreen or smartphone.

Need an adjustment? Just tap. Our new dosing technology lets you instantly add pH Up or pH Down or schedule an automated dose of Phosphate Remover, no guesswork required.

Cleaner

BETTER WATER. FEWER CHEMICALS.

Our salt system generates chlorine from salt, so fewer chemicals are required. Combined with automated monitoring and precise dosing, it helps keep water crystal clear, gentle on skin and eyes, and fresh for up to a full year*.

Simpler

LET YOUR SPA DO THE THINKING.

FreshWater IQ takes the guesswork out of water care. Smart alerts, step-by-step instructions, and automated dosing make it the easiest system we've ever built.

Better

THE FUTURE OF WATER CARE IS HERE.

Fully integrated and intelligently designed, FreshWater IQ helps deliver clean, balanced, and natural feeling water with less effort, so you can soak more and stress less.



*Many factors affect the life of spa water, such as bather load and water chemistry. When these factors are accounted for and the spa is properly maintained, the FreshWater Salt System will keep water clean and clear for up to a full year.

WATER CARE WITH PURPOSE

FreshWater® IQ combines three innovations into one integrated water care solution:



FRESHWATER SALT SYSTEM

Generates chlorine from salt using a replaceable titanium cartridge to keep spa water fresh, clear, and natural-feeling.



SMART MONITORING SYSTEM

Checks pH, chlorine, and salt levels every hour, and displays updates and actionable recommendations on your control panel.



NEW! DOSING SYSTEM

Delivers accurate doses of pH Up, pH Down, and Phosphate Remover with a simple tap, using refillable cartridges tucked discreetly under the spa's filter lid. It's intelligent water care made simple.



Technology that Simplifies

CONNECTED SPA KIT & HOT SPRING® SPAS APP

Control and monitor your spa from your smartphone with the Hot Spring Spas app. Powered by the Connected Spa Kit, the app allows you to control your spa any time from virtually anywhere.

From your mobile device, you can:

- Remotely monitor pH, chlorine, and salt levels*
- Trigger water care dosing*
- Adjust lighting, temperature, and jet strength
- Chat with an AI-powered support assistance 24/7

Available on Highlife and Limelight Collection spa models from 2024 onward, and Hot Spot Collection models from 2025 onward.

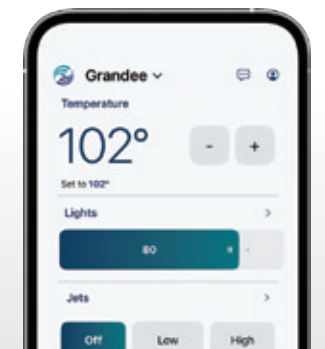
The Connected Spa Kit is a remote system that relies on connections of Wi-Fi components between the spa and a home network. The system is for the convenience of the hot tub owner and does not replace regular physical inspection and/or maintenance of the hot tub.

*FreshWater IQ is required to use these functions.



DOWNLOAD NOW

Scan the QR code to the right to download the new Hot Spring Spas App.



"Everything from delivery to set up went great! Love the IQ system and salt system, water feels wonderful and easy to maintain!"

— Prodigy® Owner, Scottsville, New York

CHOOSE YOUR SPA

With four distinct Collections and a wide range of models, sizes, and colors, there's a Hot Spring® spa that fits you and your space.



HIGHLIFE® COLLECTION

Our best. To unleash your best. Legendary massage, leading energy efficiency, and crystal clear water for the ultimate hydrotherapy experience.



LIMELIGHT® COLLECTION

Advanced design and features to bring your hot tub experience to new levels. A cut above.



HOT SPOT® COLLECTION

Quality, innovation, and performance designed to deliver the essential Hot Spring experience.



FREEFLOW® COLLECTION

Everyday vitality with Plug-N-Play ease backed by the quality Hot Spring is known for.



HIGHLIFE® COLLECTION

Our Best. To Unleash Your Best.

For those who expect the most out of life, the Highlife Collection is everything a hot tub can be. Exceptionally designed. Intentionally engineered. Generously appointed. It's our very best.

"I've been using my new spa almost every day since installation. It is an amazing experience for relaxing and releasing tight muscles. So glad we bought it!"
— Jetsetter® Owner, Tucson, Arizona



Cabinet: Blackwood
Shell: Alpine White



Cabinet: Java
Shell: Alpine White

HIGHLIFE® COLLECTION

LEGENDARY MASSAGE



BACK MASSAGE LIKE NO OTHER

Our very best spas feature our most legendary innovation—Moto-Massage® DX jet. Patented moving jets provide powerful water streams that sweep up and down your back for a massage like no other.



PERFECT POSITIONING

Sculpted seats cradle your body's contours in a natural position to help relieve pressure and deliver a better spa experience. Each jet is perfectly and intentionally placed to target specific muscles, resulting in a distinctive massage from your neck to your shoulders, back, wrists, calves, and feet.



PERSONALIZED CONTROL

Simply adjust the jet face with the Comfort Control® System to personalize each soak with a powerful massage or a soft touch. Customize the waterflow to different jet groups or seats throughout the spa with the SmartJet® System.

EASY WATER CARE



FRESHWATER® SALT SYSTEM INCLUDED

Standard on Highlife® Collection spas, the FreshWater® Salt System forms the foundation of the ground-breaking FreshWater® IQ System, the most advanced water care system on the planet. Powered by three integrated technologies—our patented Salt System, real-time Smart Monitoring, and all-new precision Dosing, FreshWater IQ delivers clean, balanced, and natural-feeling water with less effort.



100% CLEAN, 100% OF THE TIME

All water in a Highlife Collection spa is filtered 100% of the time, meaning every drop of water passes through filters, even when you're soaking with the jets on.

The key is our proprietary 100% No-Bypass Filtration System paired with our exclusive high-flow Tri-X® filters, featuring a unique no-pleat, multi-channel design that delivers superior performance, exceptional durability, and unrivaled cleaning convenience.

Every drop of water is cleaned every time it moves, no exceptions. You simply will not find cleaner water in any other spa.

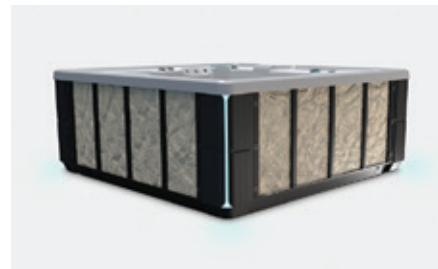


HIGHLIFE® COLLECTION

ENERGY SMART® SYSTEM

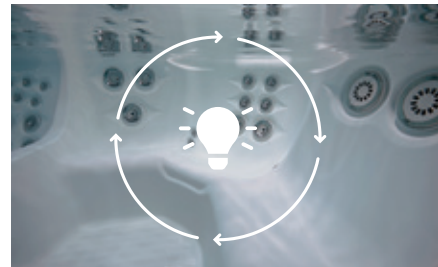
Keeps Spa Water Hot and Energy Bills Low

Through a combination of innovations, Highlife Collection spas offer the very best in energy-saving design so that your spa will be hot and ready when you are.



ENHANCED ENERGY EFFICIENCY

Built for durability and long life, each Highlife Collection spa features a polymer structure, multiple layers of high density foam insulation, and an insulated base pan, eliminating gaps and voids while locking in heat and maximizing energy efficiency.



DEDICATED CIRCULATION PUMP

The SilentFlo 5000® Circulation Pump is a dedicated pump that continuously circulates spa water 24 hours a day, while using less energy than a 40-watt light bulb. This eliminates the need to rely on high-powered jet pumps to circulate water, reducing energy costs and wear.



RECYCLED HEAT

A Hot Spring-exclusive patented pump shroud captures heat generated in the spa's equipment compartment and recycles it, transferring heat to the water to reduce energy consumption.



LOGO LIGHT INDICATOR

Be confident your spa is hot and ready before you even step outside with the Ready Indicator Light in the Hot Spring® logo. It also doubles as a valuable diagnostic tool, letting you know when your spa needs attention.

STRIKINGLY BEAUTIFUL

Bold, Yet Elegant. Fresh, Yet Timeless. Graceful, Yet Powerful.

The Highlife® Collection redefines how a hot tub looks. Elegantly contoured corners reveal accent lights that beckon you closer. Stainless steel and brushed metal finishes add richness and refinement. Clean lines, sophisticated appointments, and durable materials all work together in harmony to create a unique look that both inspires and endures.

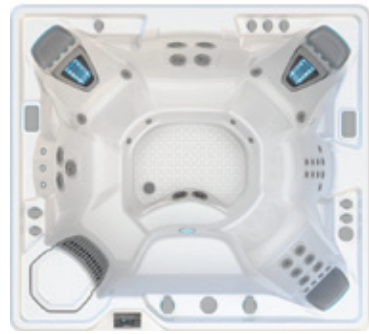


Cabinet: Linen
Shell: Alpine White



Cabinet: Charcoal
Shell: Platinum

HIGHLIFE® COLLECTION



GRANDEE®

7 Seats
49 Jets
8'4" x 7'7" x 38"



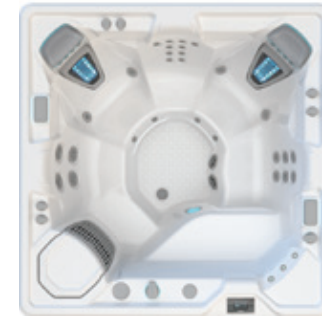
ENVOY®

5 Seats
55 Jets
8'4" x 7'7" x 38"



ARIA®

5 Seats
42 Jets
7'3" x 7'3" x 36"



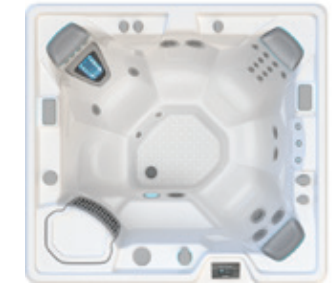
VANGUARD®

6 Seats
42 Jets
7'3" x 7'3" x 36"



SOVEREIGN®

5 Seats
32 Jets
6'8" x 7'9" x 33"



PRODIGY®

5 Seats
28 Jets
7' x 6'6" x 33"



JETSETTER® LX

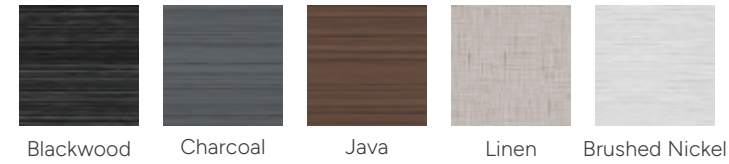
3 Seats
30 Jets
7' x 5'8" x 33"



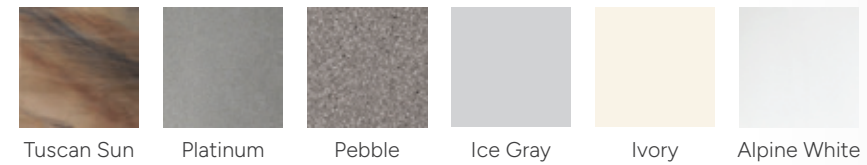
JETSETTER®

3 Seats
22 Jets
7' x 5'8" x 33"

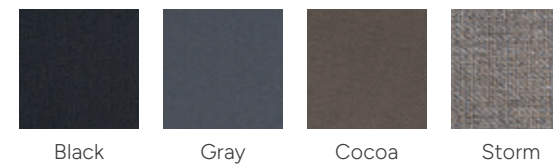
CABINETS



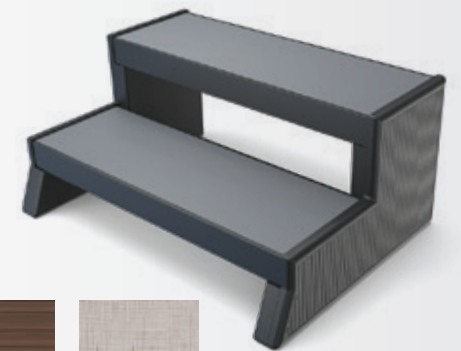
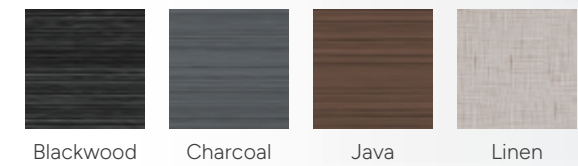
SHELLS



COVERS



STEPS



COMBINATION OPTIONS

Cabinet	Blackwood	Java	Charcoal	Linen	Brushed Nickel
Shell	Alpine White Ice Gray Platinum	Alpine White Ice Gray Ivory Tuscan Sun Pebble	Alpine White Ice Gray Platinum Tuscan Sun Pebble	Alpine White Ivory Tuscan Sun Pebble	Alpine White Ice Gray Platinum
Cover	Black	Storm	Gray	Cocoa	Black

Actual colors and products may vary from print representation. See dealer to verify.



VISUALIZE THESE SPAS IN YOUR SPACE

Download the free Virtual View™ AR app and use augmented reality to see how a Hot Spring spa can transform your space.



LIMELIGHT® COLLECTION

Advanced Design and Features. A Cut Above.

Featuring fresh, clean lines, mood lighting, and sleek corner accents, Limelight Collection spas stand out from the crowd. Best-in-class features and a legendary Hot Spring® experience make these spas a cut above the rest.

"From spending time together to recovering from our workouts we love our new spa. We feel better and sleep better after an evening soak. It also brings us together and gives us time to connect. We love it!"

– Flair® Owner, Clifton Park, New York



Cabinet: Espresso
Shell: Alpine White



Cabinet: Coastal Gray
Shell: Ice Gray

LIMELIGHT® COLLECTION



Personalized Massage

Thoughtfully placed jets target specific muscle groups, from your neck to your shoulders, back, calves, wrists, and feet. In Limelight Collection spas, you have a variety of choices for a complete, full-body massage in sculpted seats that position your body to relieve stress and keep you in place.

Our Comfort Control® System lets you adjust intensity, while our SmartJet® System directs water flow to specific jet groups for a truly personalized massage.

Energy Efficiency Elevated

Exclusive FiberCor® insulation fills the cabinet completely to a density four times greater than the half-pound foam used in most spas on the market. Combined with Energy Smart® features like the SilentFlo 5000® Circulation Pump, a patented pump shroud that recycles heat, and the No-Fault® Heater, Limelight Collection spas keep water hot and energy costs low.



Simply Cleaner Water

Crystal clear water is essential to a premium spa experience. Limelight Collection spas feature our exclusive FreshWater® IQ System, a seamless integration of three technologies for the best possible water including FreshWater Salt System, Smart Monitoring, and precision Dosing. When paired with our unique dual-action filtration system, water is kept cleaner, longer with less maintenance.

See Things in a Whole New Light

Limelight Collection spas feature our highest count of lights for a stylish soak. The interior lighting system features multiple points of light placed to accent the contours of the spa shell. Two exterior LED light bars integrate with the front corners of the spa, creating a uniquely elegant look that is unlike any other. Match the color to your mood by selecting the hue and brightness of your choice or cycle through all six vibrant choices.



READY WHEN YOU ARE

You'll always know when your spa is ready – even from a distance. A color-coded Ready Indicator Light shows at a glance when your water is at the set temperature. The light will indicate if your spa needs maintenance, a filter change, or service.



LIMELIGHT® COLLECTION



PRISM™

7 Seats
73 Jets
9'2" x 7'7" x 38"



PULSE®

7 Seats
49 Jets
7'5" x 7'5" x 38"



FLAIR®

6 Seats
43 Jets
7' x 7' x 36"



FLASH™

7 Seats
41 Jets
7' x 7' x 36"



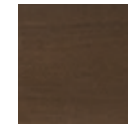
BEAM™

4 Seats
19 Jets
6'8" x 6'8" x 33"



Cabinet: Sable
Shell: Alpine White

CABINETS



Espresso

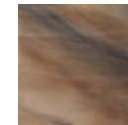


Sable

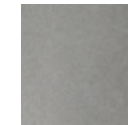


Coastal Gray

SHELLS



Tuscan Sun



Platinum



Desert

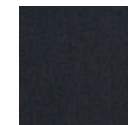


Ice Gray



Alpine White

COVERS

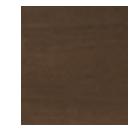


Black
(Optional)



Storm

STEPS



Espresso



Sable



Coastal Gray



COMBINATION OPTIONS

Cabinet	Espresso	Sable	Coastal Gray
Shell	Alpine White Ice Gray Desert Platinum Tuscan Sun	Alpine White Ice Gray Desert Platinum Tuscan Sun	Alpine White Ice Gray Desert Platinum Tuscan Sun
Cover	Storm	Storm	Storm

Actual colors and products may vary from print representation. See dealer to verify.



VISUALIZE THESE SPAS IN YOUR SPACE

Download the free Virtual View™ AR app and use augmented reality to see how a Hot Spring spa can transform your space.



HOT SPOT® COLLECTION

Designed to Deliver the Essential Hot Spring Experience

Eye-catching design, unique massage, and trusted quality from the industry leader. Hot Spot Collection spas help you maximize every day for years to come.

"I use my Rhythm hot tub almost every evening and it's honestly the best part of my day. After a long day nothing beats sinking into the warm water. It's become my go-to way to unwind."

– Rhythm® Owner, East Northport, New York



Cabinet: Storm
Shell: Alpine White



Cabinet: Havana
Shell: Alpine White

HOT SPOT® COLLECTION



Legacy of Legendary Massage

Experience the complete massage you expect from a Hot Spring® spa in the Hot Spot Collection. A variety of jet types, powered by our reliable Wavemaster® pump, work together with personalized control to deliver a legendary massage.

The SX and TX models feature the exclusive, revolutionary Moto-Massage® moving jet with a warm stream of water that sweeps up and down the length of your back for a truly unparalleled hydromassage experience.



Easy Water Care

The simpler, cleaner, fresher way to hot tub™. The FreshWater® Salt System is a revolution in water care. Water is sanitized with a titanium cartridge that automatically generates chlorine from salt for soft, natural-feeling water without harsh odors, itchy skin, or irritated eyes. This breakthrough technology is the simple way to keep your hot tub water clean and feeling soft for up to a full year.*



Energy Efficiency

Keeping water hot and energy costs low, each Hot Spot Collection spa features FiberCor® insulation, completely filling the cabinet to a density four times greater than the half-pound foam used in most spas on the market. Paired with custom-fit WeatherPro™ covers with an exclusive hinge seal, you'll soak with confidence knowing your Hot Spot Collection spa meets or exceeds stringent California Energy Commission (CEC) and APSP 14 energy efficiency standards for portable spas.

*Many factors affect the life of spa water, such as bather load and water chemistry. When spa water is properly maintained considering these factors, a 3-pack of FreshWater Salt System cartridges will keep water clean and clear for up to a full year.



EYE-CATCHING DESIGN

Each spa creates a dynamic backyard focal point with distinctive design details. Subtly embossed cabinets give the look of natural materials yet provide the durability of advanced composites. Choose between three stunning cabinet colors that can be combined with a variety of shell finishes to create a look that complements your home.

Details Deliver a Difference



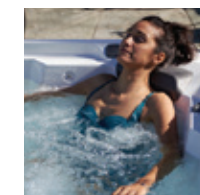
Multi-color LED lights inside and out** accentuate the design of your spa while setting the mood with a single color or revolving display.



Sculpted seating contours your body and integrated pillows cradle your head and neck to create a comfortable soaking experience.



Convenient floor drain makes scheduled water changes a breeze.



Backed by a decades-long reputation for outstanding quality and value, you can count on years of enjoyment and reliability with your Hot Spot Collection hot tub.



The large bar top offers space to place your favorite beverage, phone, or other hot tubbing accessory within reach throughout your soak.

**Exterior lighting not available on SX and TX models.

HOT SPOT® COLLECTION



RHYTHM®

7 Seats
40 Jets
7' x 7' x 36"



RELAY®

6 Seats
40 Jets
7' x 7' x 36"



PACE™

5 Seats
24 Jets
6'10" x 6'10" x 33"



STRIDE®

3 Seats
20 Jets
7' x 5'5" x 29"



SX

3 Seats
18 Jets
6' x 6'5" x 29"



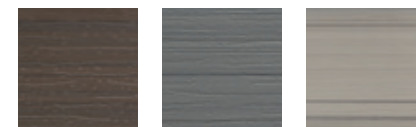
TX

2 Seats
11 Jets
6' x 6' x 29"



Cabinet: Havana
Shell: Alpine White

CABINETS



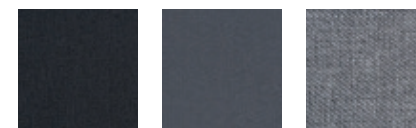
Havana Storm Almond

SHELLS



Tuscan Sun Pebble Pearl Alpine White

COVERS



Black Gray Chestnut

STEPS



Havana Storm Almond



COMBINATION OPTIONS

Cabinet	Havana	Storm	Almond
Shell	Alpine White Pearl Pebble Tuscan Sun	Alpine White Pearl Pebble Tuscan Sun	Alpine White Pearl Pebble Tuscan Sun
Cover	Black	Gray	Chestnut

Actual colors and products may vary from print representation. See dealer to verify.



VISUALIZE THESE SPAS IN YOUR SPACE

Download the free Virtual View™ AR app and use augmented reality to see how a Hot Spring spa can transform your space.



FREEFLOW® COLLECTION

Everyday Vitality with Plug-N-Play Ease Backed by Hot Spring® Quality

Durable, portable, and easy-to-own, the Freeflow Collection delivers the ideal soaking experience backed by the quality Hot Spring is known for.

"I love my Freeflow spa because it is the perfect size for my patio and it is so easy to maintain. My absolute favorite time to go in is when it's snowing! My daughter loves to have our Mother/ Daughter time while we are soaking! It's so perfect!!"

– Azure™ Owner, Wisconsin



Color: Smoke
Pattern: Diamond Weave



Color: Dune
Pattern: Mosaic

FREEFLOW® COLLECTION



Clean Water with Ease

Freeflow Collection spas come ready for the FROG® Sanitizing System.* Prefilled cartridges automatically release sanitizer and minerals to keep water soft, clean, and clear with less effort.

* Available in the U.S. only; bromine is available in Canada.



Plug-N-Play Simplicity

Save time and money with Plug-N-Play technology which requires no additional wiring. Simply fill up your hot tub, plug it into any standard 115 V outlet, and enjoy! And because every spa is fully insulated to meet strict California Energy Commission (CEC) standards, your easy setup is matched by everyday energy efficiency.



High-Quality Hot Tubbing Anywhere

Freeflow Collection spas are rotationally molded, producing a durable, unibody hot tub shell that eliminates the need for an internal support frame. These spas are also lightweight and easy to move, making it simple to enjoy hot tubbing, virtually anywhere.



Color: Dune
Pattern: Diamond Weave

Hot Tubbing is as Easy as 1-2-3!

- 1 Fill it up.
- 2 Plug it in.
- 3 Enjoy!



MONTEREY™

5 Seats
40 Jets
6'6" x 6'6" x 34"



EXCURSION®

4 Seats
33 Jets
6'6" x 6'6" x 34"



AZURE™

4 Seats
25 Jets
5'7" x 6'7" x 33"



APTOS™

5 Seats
21 Jets
6'6" Diameter x 33"



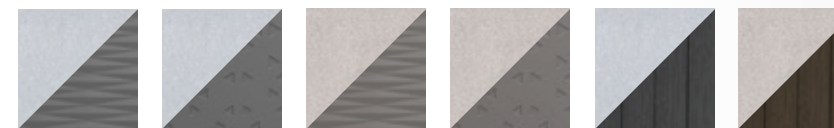
MINI™

2 Seats
11 Jets
6' x 4'5" x 29"



Color: Smoke
Pattern: Diamond Weave

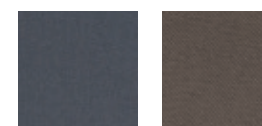
COLORS



Smoke with Diamond Weave Smoke with Mosaic Dune with Diamond Weave Dune with Mosaic Smoke with Coastal Gray Dune with Espresso

Aptos Options

COVERS



Gray
Pairs with Smoke Shell Cocoa
Pairs with Dune Shell

STEPS



Smoke Dune



Actual colors and products may vary from print representation. See dealer to verify.

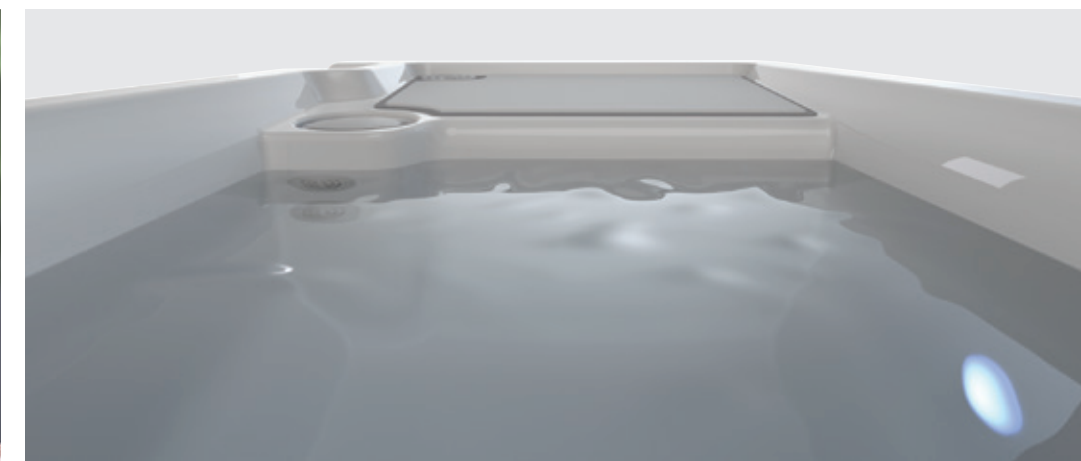
VIGOR™ COLD PLUNGE

Refreshingly Cold. Expertly Crafted.

Built with the same quality, durability, and innovation that makes Hot Spring® Spas the world's best-selling hot tub brand, the Vigor reimagines the cold plunge experience. The ultimate addition to your wellness routine, it delivers convenience, reliability, and unmatched performance.



Cabinet: Ash
Shell: Alpine White



Cabinet: Mocha
Shell: Alpine White

VIGOR™ COLD PLUNGE



Why Take the Plunge?

ENHANCED RESILIENCE TO STRESS

Pushing past “mental hurdles” with regular cold exposure trains the nervous system to handle stress calmly, reducing baseline anxiety over time.

ENERGY BOOST

Cold water enhances your body’s natural cooling processes so you feel more alert and recharged. Depending on your health and sensitivity, cold plunging can leave you refreshed, revitalized, and ready for the day.

REDUCED MUSCLE SORENESS

By lowering tissue temperature, cold exposure helps muscles recover faster and reduces soreness, making it ideal for athletes and active individuals.

HEIGHTENED MOOD, FOCUS, AND MENTAL ACUITY

Cold exposure stimulates the release of norepinephrine and dopamine, which enhance mood, motivation, and mental acuity.

*Individual results may vary.



Building Your Cold Plunge Routine

Setting up a cold plunge routine tailored to your goals is simple:

START SAFE AND GRADUAL

Begin with water temperatures between 45-60°F for 1-2 minutes, gradually extending duration and lowering temperature as tolerance builds.

FREQUENCY

Aim for 2-4 sessions weekly, targeting a total of 11 minutes per week. This approach aligns with research highlighting optimal benefits from consistent exposure.

MINDSET

Embrace the initial discomfort as an opportunity to practice calmness and resilience.

Controlled breathing techniques, such as slow rhythmic breaths, can help manage the cold and extend your time comfortably.

Hot & Cold Therapy in Perfect Harmony

Experience the power of contrast therapy with the winning combination of a Hot Spring® spa and the Vigor™ cold plunge. Embraced by fitness enthusiasts and elite athletes, this invigorating wellness practice alternates warm water hydrotherapy with bracing cold to deliver a range of health benefits, from boosting your energy levels and reducing muscle soreness to enhancing sleep and building resilience to stress.

Unlock total wellness with the routine designed to speed recovery, strengthen endurance, and enhance your overall well-being.



VIGOR™

1 Seat
40°F Low Temp
7'4" x 3'6" x 29"

CABINETS



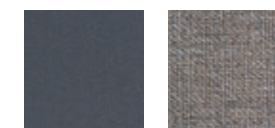
Ash Mocha

SHELL



Alpine White

COVERS



Gray Storm

COMBINATION OPTIONS

Cabinet	Ash	Mocha
Shell	Alpine White	Alpine White
Cover	Gray	Storm



Cabinet: Ash
Shell: Alpine White

Actual colors and products may vary from print representation. See dealer to verify.

NECESSARIES[®]

Upgrade your hot tub experience with high-quality accessories exclusively designed for your Hot Spring spa.



WeatherPro[™] Covers

Available in contemporary shades to complement any home and outdoor space, WeatherPro covers feature durable, fade-resistant materials that provide superior resistance to the elements, while meeting the rigorous energy standards set by the California Energy Commission (CEC) for portable spas. These custom-fit covers lock in heat to save energy and ensure that your spa stays warm and ready for your next soak.



Cover Lifters

Our patented cover lifter systems make opening and closing the spa cover simple, helping maintain your hot tub, extending the life of your cover, and, most importantly, making it easier for you to enjoy your spa every day.



COVERCRADLE[®]

For the ultimate in ease, this robust system offers an ultra-smooth gliding mechanism and the power of pneumatic springs to support covers on even our largest spas.

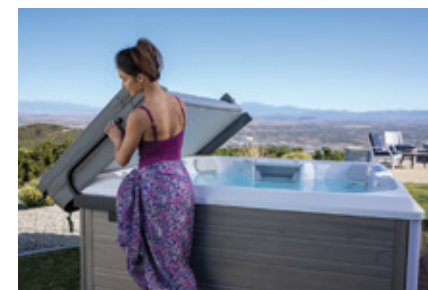
Requires 24" minimum clearance.



UPRITE[®]

Ideal for tight spaces and recessed spa installations, the UpRite cover lifter also provides an element of privacy by holding your folded cover in a vertical position.

Requires just 7" minimum clearance.



LIFT 'N GLIDE[®]

The Lift 'n Glide is easy to operate – simply lift the cover, glide it back, and enjoy your soak.

Requires 14" minimum clearance.



Spa Side Enhancements

Thoughtful spa side additions help elevate your hot tubbing experience.

TOWEL TREE

Keep your towel within reach on the stylish and easy-to-assemble aluminum towel tree.

HANDRAIL

Safely enter and exit your spa with our sturdy handrail that swings to allow access from inside and outside the spa. It also features a battery-powered LED light for added convenience and safety.

The Smart Way to Hot Tub

Control and monitor your spa any time, from virtually anywhere. Do it all from the convenience of your phone. Keep an eye on spa status, change key settings like jets, temperature, and lighting, manage installed accessories,* set up customized alerts, and more.* Have peace of mind when you're on the go or have a spa at a second home, knowing you can check in on your spa from anywhere. With Hot Spring Spas, there's a convenient app solution available for all four Collections.

*Hot Spring Spas app requires the FreshWater IQ System for some app features to work.



Steps

Complete your Hot Spring spa set up with steps that make it easier to get into and out of your hot tub. Our steps are designed to match your Hot Spring spa with coordinating colors and cabinet matching materials.

Technology that Enhances

MUSIC OPTIONS

Enjoy audio entertainment with your Hot Spring spa. When you opt for a music-ready spa, you get built-in speakers. You can add a wireless audio system, which allows you to connect your spa to your home entertainment system and other devices. Kick up your music experience with a subwoofer, too, and you might never leave the water.





THE ABSOLUTE BEST HOT TUB OWNERSHIP EXPERIENCE®

Hot Spring Leads The Way

As the world's best-selling spa brand, Hot Spring earned its reputation for quality and innovation. But we don't stop there. Our focus is on providing The Absolute Best Hot Tub Ownership Experience® through unparalleled massage, worry-free water care, energy saving features, and unmatched customer care. With a Hot Spring spa, you can relax today, tomorrow, and long after your purchase.

45+ Years of Excellence | 2 Million+ Spas Sold | 50 States & 70 Countries

The Best Retailer Partners

Our group of authorized Hot Spring dealers provides unparalleled customer care as you shop for, purchase, and enjoy your new hot tub or cold plunge. With sales and service centers located worldwide, we have the most extensive support network in the industry.

A Brand You Can Trust

For more than 45 years, we've built our reputation on quality and have earned TradeCertified™ certification for providing a superior ownership experience every year since the award's inception in 2005.



Hot Spring Spas is a brand of Watkins Wellness, the leader in hot tub and aquatic fitness products. Watkins Wellness is part of MASCO Corporation, a Fortune 500 company whose family of quality home products includes:



"We love our spa! It helps us relax and wipeout the stress of the day."
—Vanguard® Owner, Surprise, Arizona

See what real Hot Spring owners are saying at hotspring.com/reviews

HIGHLIFE® COLLECTION

	GRANDEE®	ENVOY®	ARIA®	VANGUARD®
Seat Capacity	7	5	5	6
Dimensions <i>(Subject to Change)</i>	8'4" x 7'7" x 38" 254 cm x 231 cm x 97cm	8'4" x 7'7" x 38" 254 cm x 231 cm x 97 cm	7'3" x 7'3" x 36" 221 cm x 221 cm x 91 cm	7'3" x 7'3" x 36" 221 cm x 221 cm x 91 cm
Jet Count	49	55	42	42
Water Capacity	455 g / 1725 L	455 g / 1725 L	365 g / 1400 L	375 g / 1425 L
Dry Weight	790 lb / 360 kg	785 lb / 355 kg	680 lb / 310 kg	710 lb / 320 kg
Filled Weight	5810 lb / 2645 kg	5455 lb / 2480 kg	4600 lb / 2110 kg	4890 lb / 2225 kg
Shell Colors	Alpine White, Ice Gray, Ivory, Pebble, Platinum, Tuscan Sun	Alpine White, Ice Gray, Ivory, Pebble, Platinum, Tuscan Sun	Alpine White, Ice Gray, Ivory, Pebble, Platinum, Tuscan Sun	Alpine White, Ice Gray, Ivory, Pebble, Platinum, Tuscan Sun
Cabinet Colors	Blackwood, Brushed Nickel, Charcoal, Java, Linen	Blackwood, Brushed Nickel, Charcoal, Java, Linen	Blackwood, Brushed Nickel, Charcoal, Java, Linen	Blackwood, Brushed Nickel, Charcoal, Java, Linen
Cabinet Type	Highlife® All-Weather Low Maintenance	Highlife® All-Weather Low Maintenance	Highlife® All-Weather Low Maintenance	Highlife® All-Weather Low Maintenance
Step Type	Highlife Step: Blackwood, Charcoal, Java, Linen	Highlife Step: Blackwood, Charcoal, Java, Linen	Highlife Step: Blackwood, Charcoal, Java, Linen	Highlife Step: Blackwood, Charcoal, Java, Linen
Cover Colors	Black, Gray, Cocoa, Storm	Black, Gray, Cocoa, Storm	Black, Gray, Cocoa, Storm	Black, Gray, Cocoa, Storm
Cover Lifters	CoverCradle®, CoverCradle® II, Lift n' Glide®, Uprite®	CoverCradle®, CoverCradle® II, Lift n' Glide®, Uprite®	CoverCradle®, CoverCradle® II, Lift n' Glide®, Uprite®	CoverCradle®, CoverCradle® II, Lift n' Glide®, Uprite®
Bottom Seal	Polymeric Molded Base Pan	Polymeric Molded Base Pan	Polymeric Molded Base Pan	Polymeric Molded Base Pan
Lighting	Luminescence® Multi-Color LED with 4 Zone Mood Settings	Luminescence® Multi-Color LED with 4 Zone Mood Settings	Luminescence® Multi-Color LED with 4 Zone Mood Settings	Luminescence® Multi-Color LED with 4 Zone Mood Settings
Logo Light	Hot Spring Logo Badge Diagnostic Self-Dimming Status Light	Hot Spring Logo Badge Diagnostic Self-Dimming Status Light	Hot Spring Logo Badge Diagnostic Self-Dimming Status Light	Hot Spring Logo Badge Diagnostic Self-Dimming Status Light
Jet Pump 1	Wavemaster® 9000 1-Speed 2.5 HP, Continuous Duty (5.2 HP, Breakdown Torque)	Wavemaster® 9000 1-Speed 2.5 HP, Continuous Duty (5.2 HP, Breakdown Torque)	Wavemaster® 9000 1-Speed 2.5 HP, Continuous Duty (5.2 HP, Breakdown Torque)	Wavemaster® 9000 1-Speed 2.5 HP, Continuous Duty (5.2 HP, Breakdown Torque)
Jet Pump 2	Wavemaster® 9200 2-Speed 2.5 HP, Continuous Duty (5.2 HP, Breakdown Torque)	Wavemaster® 9200 2-Speed 2.5 HP, Continuous Duty (5.2 HP, Breakdown Torque)	Wavemaster® 9200 2-Speed 2.5 HP, Continuous Duty (5.2 HP, Breakdown Torque)	Wavemaster® 9200 2-Speed 2.5 HP, Continuous Duty (5.2 HP, Breakdown Torque)
Jets	2 Moto-Massage® DX Jets (2) 2 SoothingStream® Jets 2 JetStream® Jets 5 Hydromassage Directional Jets 10 Hydrostream® Directional Jets 26 Precision® Directional Jets	2 Moto-Massage® DX Jets (2) 2 SoothingStream® Jets 5 JetStream® Jets 4 Hydromassage Directional Jets 6 Hydrostream® Directional Jets 4 Precision® Rotary Jets 30 Precision® Directional Jets	2 Moto-Massage® DX Jets (2) 2 SoothingStream® Jets 5 JetStream® Jets 2 Hydromassage Directional Jets 2 Hydrostream® Directional Jets 2 Precision® Rotary Jets 26 Precision® Directional Jets	2 Moto-Massage® DX Jets (2) 2 SoothingStream® Jets 2 JetStream® Jets 2 Hydromassage Directional Jets 10 Hydrostream® Directional Jets 22 Precision® Directional Jets
Controls	IQ 2020® Color LCD Touchscreen	IQ 2020® Color LCD Touchscreen	IQ 2020® Color LCD Touchscreen	IQ 2020® Color LCD Touchscreen
Circulation Pump	SilentFlo 5000® Quiet Continuous Filtration	SilentFlo 5000® Quiet Continuous Filtration	SilentFlo 5000® Quiet Continuous Filtration	SilentFlo 5000® Quiet Continuous Filtration
Heater	No-Fault® 4000w/230 V	No-Fault® 4000w/230 V	No-Fault® 4000w/230 V	No-Fault® 4000w/230 V
Filtration	5 Tri-X® Filters, Top-Loading, 100% No-Bypass Filtration	5 Tri-X® Filters, Top-Loading, 100% No-Bypass Filtration	5 Tri-X® Filters, Top-Loading, 100% No-Bypass Filtration	5 Tri-X® Filters, Top-Loading, 100% No-Bypass Filtration
Water Care System	FreshWater® IQ System: Salt - Included Smart Monitoring - Ready Dosing - Ready	FreshWater® IQ System: Salt - Included Smart Monitoring - Ready Dosing - Ready	FreshWater® IQ System: Salt - Included Smart Monitoring - Ready Dosing - Ready	FreshWater® IQ System: Salt - Included Smart Monitoring - Ready Dosing - Ready
Electrical Requirements	230 V/50 amp, 60 Hz	230 V/50 amp, 60 Hz	230 V/50 amp, 60 Hz	230 V/50 amp, 60 Hz
GFCI Protected Sub-Panel	Included	Included	Included	Included
Music System (Optional)	Wireless Audio System	Wireless Audio System	Wireless Audio System	Wireless Audio System
Water Features	BellaFontana® Fountain	BellaFontana® Fountain	BellaFontana® Fountain	BellaFontana® Fountain

	SOVEREIGN®	PRODIGY®	JETSETTER® LX	JETSETTER®
Seat Capacity	5	5	3	3
Dimensions <i>(Subject to Change)</i>	6'8" x 7'9" x 33" 203 cm x 236 cm x 84 cm	7'0" x 6'6" x 33" 213 cm x 198 cm x 84 cm	7'0" x 5'8" x 33" 213 cm x 173 cm x 84 cm	7'0" x 5'8" x 33" 213 cm x 173 cm x 84 cm
Jet Count	32	28	30	22
Water Capacity	330 g / 1250 L	270 g / 1025 L	250 g / 950 L	245 g / 925 L
Dry Weight	600 lb / 270 kg	575 lb / 260 kg	515 lb / 235 kg	500 lb / 225 kg
Filled Weight	4230 lb / 1920 kg	3705 lb / 1685 kg	3125 lb / 1425 kg	3070 lb / 1390 kg
Shell Colors	Alpine White, Ice Gray, Ivory, Pebble, Platinum, Tuscan Sun	Alpine White, Ice Gray, Ivory, Pebble, Platinum, Tuscan Sun	Alpine White, Ice Gray, Ivory, Pebble, Platinum, Tuscan Sun	Alpine White, Ice Gray, Ivory, Pebble, Platinum, Tuscan Sun
Cabinet Colors	Blackwood, Brushed Nickel, Charcoal, Java, Linen	Blackwood, Brushed Nickel, Charcoal, Java, Linen	Blackwood, Brushed Nickel, Charcoal, Java, Linen	Blackwood, Brushed Nickel, Charcoal, Java, Linen
Cabinet Type	Highlife® All-Weather Low Maintenance	Highlife® All-Weather Low Maintenance	Highlife® All-Weather Low Maintenance	Highlife® All-Weather Low Maintenance
Step Type	Highlife Step: Blackwood, Charcoal, Java, Linen	Highlife Step: Blackwood, Charcoal, Java, Linen	Highlife Step: Blackwood, Charcoal, Java, Linen	Highlife Step: Blackwood, Charcoal, Java, Linen
Cover Colors	Black, Gray, Cocoa, Storm	Black, Gray, Cocoa, Storm	Black, Gray, Cocoa, Storm	Black, Gray, Cocoa, Storm
Cover Lifters	CoverCradle®, CoverCradle® II, Lift n' Glide®, Uprite®	CoverCradle®, CoverCradle® II, Lift n' Glide®	CoverCradle®, CoverCradle® II, Lift n' Glide®	CoverCradle®, CoverCradle® II, Lift n' Glide®
Bottom Seal	Polymeric Molded Base Pan	Polymeric Molded Base Pan	Polymeric Molded Base Pan	Polymeric Molded Base Pan
Lighting	Luminescence® Multi-Color LED with 4 Zone Mood Settings	Luminescence® Multi-Color LED with 4 Zone Mood Settings	Luminescence® Multi-Color LED with 4 Zone Mood Settings	Luminescence® Multi-Color LED with 4 Zone Mood Settings
Logo Light	Hot Spring Logo Badge Diagnostic Self-Dimming Status Light	Hot Spring Logo Badge Diagnostic Self-Dimming Status Light	Hot Spring Logo Badge Diagnostic Self-Dimming Status Light	Hot Spring Logo Badge Diagnostic Self-Dimming Status Light
Jet Pump 1	Wavemaster® 9200 2-Speed 2.5 HP, Continuous Duty (5.2 HP, Breakdown Torque)	Wavemaster® 9200 2-Speed 2.5 HP, Continuous Duty (5.2 HP, Breakdown Torque)	Wavemaster® 9000 1-Speed 2.5 HP, Continuous Duty (5.2 HP, Breakdown Torque)	Wavemaster® 7000 1-Speed 1.65 HP, Continuous Duty (3.5 HP, Breakdown Torque)
Jet Pump 2	N/A	N/A	N/A	N/A
Jets	1 Moto-Massage® DX Jet (2) 4 SoothingStream® Jets 3 JetStream® Jets 1 Hydrostream® Directional Jet 2 Precision® Rotary Jets 20 Precision® Directional Jets	1 Moto-Massage® DX Jet (2) 4 SoothingStream® Jets 1 JetStream® Jet 1 Hydromassage Directional Jet 4 Hydrostream® Directional Jets 16 Precision® Directional Jets	1 Moto-Massage® DX Jet (2) 2 SoothingStream® Jets 3 JetStream® Jets 1 Hydromassage Directional Jet 2 Precision® Rotary Jets 20 Precision® Directional Jets	1 Moto-Massage® DX Jet (2) 2 SoothingStream® Jets 1 JetStream® Jet 1 Hydromassage Directional Jet 2 Precision® Rotary Jets 14 Precision® Directional Jets
Controls	IQ 2020® Color LCD Touchscreen	IQ 2020® Color LCD Touchscreen	IQ 2020® Color LCD Touchscreen	IQ 2020® Color LCD Touchscreen
Circulation Pump	SilentFlo 5000® Quiet Continuous Filtration	SilentFlo 5000® Quiet Continuous Filtration	SilentFlo 5000® Quiet Continuous Filtration	SilentFlo 5000® Quiet Continuous Filtration
Heater	No-Fault® 6000w/230 V	No-Fault® 6000w/230 V	No-Fault® 6000w/230 V	No-Fault® 1500w/115 V or 6000w/230 V
Filtration	3 Tri-X® Filters, Top-Loading, 100% No-Bypass Filtration	3 Tri-X® Filters, Top-Loading, 100% No-Bypass Filtration	3 Tri-X® Filters, Top-Loading, 100% No-Bypass Filtration	3 Tri-X® Filters, Top-Loading, 100% No-Bypass Filtration
Water Care System	FreshWater® IQ System: Salt - Included Smart Monitoring - Ready Dosing - Ready	FreshWater® IQ System: Salt - Included Smart Monitoring - Ready Dosing - Ready	FreshWater® IQ System: Salt - Included Smart Monitoring - Ready Dosing - Ready	FreshWater® IQ System: Salt - Included Smart Monitoring - Ready Dosing - Ready
Electrical Requirements	230 V/50 amp, 60 Hz	230 V/50 amp, 60 Hz	230 V/50 amp, 60 Hz	115 V/20 amp, 60 Hz or 230 V/50 amp*
GFCI Protected Sub-Panel	Included	Included	Included	Includes 20 amp GFCI Protected Power Cord**
Music System (Optional)	Wireless Audio System	Wireless Audio System	Wireless Audio System***	Wireless Audio System***
Water Features	BellaFontana® Fountain	BellaFontana® Fountain	N/A	N/A

* Convertible to 230 V/50 amp ** Excludes Canadian Models *** Subwoofer Not Available

LIMELIGHT® COLLECTION

	PRISM™	PULSE®	FLAIR®
Seat Capacity	7	7	6
Dimensions <i>(Subject to Change)</i>	9'2" x 7'7" x 38" 279 cm x 231 cm x 97 cm	7'5" x 7'5" x 38" 226 cm x 226 cm x 97 cm	7'0" x 7'0" x 36" 213 cm x 213 cm x 91 cm
Jet Count	73	49	43
Water Capacity	525 g / 1990 L	445 g / 1685 L	335 g / 1270 L
Dry Weight	1190 lb / 540 kg	1015 lb / 460 kg	875 lb / 400 kg
Filled Weight	6795 lb / 3085 kg	5950 lb / 2700 kg	4720 lb / 2140 kg
Shell Colors	Alpine White, Desert, Ice Gray, Platinum, Tuscan Sun	Alpine White, Desert, Ice Gray, Platinum, Tuscan Sun	Alpine White, Desert, Ice Gray, Platinum, Tuscan Sun
Cabinet Colors	Coastal Gray, Espresso, Sable	Coastal Gray, Espresso, Sable	Coastal Gray, Espresso, Sable
Cabinet Type	Everwood® All-Weather Low-Maintenance	Everwood® All-Weather Low-Maintenance	Everwood® All-Weather Low-Maintenance
Step Type	Limelight Step: Coastal Gray, Espresso, Sable	Limelight Step: Coastal Gray, Espresso, Sable	Limelight Step: Coastal Gray, Espresso, Sable
Cover Colors	Black (Optional), Storm (Default)	Black (Optional), Storm (Default)	Black (Optional), Storm (Default)
Cover Lifters	CoverCradle® Included, UpRite® Compatible	CoverCradle®, CoverCradle® II, Lift n'Glide®, UpRite®	CoverCradle®, CoverCradle® II, Lift n'Glide®, UpRite®
Bottom Seal	HDPE Bottom Sheet	HDPE Bottom Sheet	HDPE Bottom Sheet
Lighting	Raio® Multi-Color LED Interior: 32 Points of Light, Plus Waterfall; Exterior: Front-corner	Raio® Multi-Color LED Interior: 32 Points of Light, Plus Waterfall; Exterior: Front-corner	Raio® Multi-Color LED Interior: 32 Points of Light, Plus Waterfall; Exterior: Front-corner
Logo Light	Hot Spring Logo Badge Diagnostic Self-Dimming Status Light	Hot Spring Logo Badge Diagnostic Self-Dimming Status Light	Hot Spring Logo Badge Diagnostic Self-Dimming Status Light
Jet Pump 1	Wavemaster® 9200 2-Speed 2.5 HP, Continuous Duty (5.2 HP, Breakdown Torque)	Wavemaster® 9200 2-Speed 2.5 HP, Continuous Duty (5.2 HP, Breakdown Torque)	Wavemaster® 8200 2-Speed 2.0 HP, Continuous Duty (4.0 HP, Breakdown Torque)
Jet Pump 2	Wavemaster® 9000 1-Speed 2.5 HP, Continuous Duty (5.2 HP, Breakdown Torque)	Wavemaster® 9000 1-Speed 2.5 HP, Continuous Duty (5.2 HP, Breakdown Torque)	Wavemaster® 8000 1-Speed 2.0 HP, Continuous Duty (4.0 HP, Breakdown Torque)
Jet Pump 3	Wavemaster® 9000 1-Speed 2.5 HP, Continuous Duty (5.2 HP, Breakdown Torque)	N/A	N/A
Jets	1 JetStream® XL Jet 1 XL Dual Rotary Jet 2 XL Single Rotary Jets 3 XL Directional Jets 7 Standard Dual Rotary Jets 4 Standard Single Rotary Jets 4 Standard Directional Jets 10 Precision® Rotary Jets 41 Precision® Directional Jets	1 XL Dual Rotary Jet 1 XL Single Rotary Jet 2 XL Directional Jets 4 Standard Single Rotary Jets 2 Standard Directional Jets 4 Precision® Rotary Jets 35 Precision® Directional Jets	1 XL Dual Rotary Jet 2 XL Single Rotary Jets 1 XL Directional Jet 6 Standard Dual Rotary Jets 2 Standard Directional Jets 31 Precision® Directional Jets
Controls	IQ 2020® Color LCD	IQ 2020® Color LCD	IQ 2020® Color LCD
Circulation Pump	SilentFlo 5000® Quiet Continuous Filtration	SilentFlo 5000® Quiet Continuous Filtration	SilentFlo 5000® Quiet Continuous Filtration
Heater	No-Fault® 4000w/230 V	No-Fault® 4000w/230 V	No-Fault® 4000w/230 V
Filtration	2 Polyester 75 sq ft Filters, 150 sq ft Total Surface Area, Top-Loading	2 Polyester 50 sq ft Filters, 100 sq ft Total Surface Area, Top-Loading	2 Polyester 50 sq ft Filters, 100 sq ft Total Surface Area, Top-Loading
Water Care System	FreshWater® IQ System: Salt - Ready Smart Monitoring - Ready Dosing - Ready	FreshWater® IQ System: Salt - Ready Smart Monitoring - Ready Dosing - Ready	FreshWater® IQ System: Salt - Ready Smart Monitoring - Ready Dosing - Ready
Electrical Requirements	230 V/50 amp, 60 Hz, Convertible to 230 V/70amp*	230 V/50 amp, 60 Hz	230 V/50 amp, 60 Hz
GFCI Protected Sub-Panel	Included	Included	Included
Music System (Optional)	Wireless Audio System	Wireless Audio System	Wireless Audio System
Water Features	Video® Waterfall LED Backlit Ribbon	Video® Waterfall LED Backlit Ribbon	Video® Waterfall LED Backlit Ribbon

	FLASH™	BEAM™ II	BEAM™ I
Seat Capacity	7	4	4
Dimensions <i>(Subject to Change)</i>	7'0" x 7'0" x 36" 213 cm x 213 cm x 91 cm	6' 8" x 6' 8" x 33" 203 cm x 203 cm x 84 cm	6' 8" x 6' 8" x 33" 203 cm x 203 cm x 84 cm
Jet Count	41	19	19
Water Capacity	360 g / 1365 L	295 g / 1115 L	295 g / 1115 L
Dry Weight	845 lb / 385 kg	700 lb / 320 kg	700 lb / 320 kg
Filled Weight	5070 lb / 2300 kg	3860 lb / 1750 kg	3860 lb / 1750 kg
Shell Colors	Alpine White, Desert, Ice Gray, Platinum, Tuscan Sun	Alpine White, Desert, Ice Gray, Platinum, Tuscan Sun	Alpine White, Desert, Ice Gray, Platinum, Tuscan Sun
Cabinet Colors	Coastal Gray, Espresso, Sable	Coastal Gray, Espresso, Sable	Coastal Gray, Espresso, Sable
Cabinet Type	Everwood® All-Weather Low-Maintenance	Everwood® All-Weather Low-Maintenance	Everwood® All-Weather Low-Maintenance
Step Type	Limelight Step: Coastal Gray, Espresso, Sable	Limelight Step: Coastal Gray, Espresso, Sable	Limelight Step: Coastal Gray, Espresso, Sable
Cover Colors	Black (Optional), Storm (Default)	Black (Optional), Storm (Default)	Black (Optional), Storm (Default)
Cover Lifters	CoverCradle®, CoverCradle® II, Lift n'Glide®, UpRite®	CoverCradle®, CoverCradle® II, Lift n'Glide®, UpRite®	CoverCradle®, CoverCradle® II, Lift n'Glide®, UpRite®
Bottom Seal	HDPE Bottom Sheet	HDPE Bottom Sheet	HDPE Bottom Sheet
Lighting	Raio® Multi-Color LED Interior: 27 Points of Light, Plus Waterfall; Exterior: Front-corner	Raio® Multi-Color LED Interior: 30 Points of Light, Plus Waterfall; Exterior: Front-corner	Raio® Multi-Color LED Interior: 30 Points of Light, Plus Waterfall; Exterior: Front-corner
Logo Light	Hot Spring Logo Badge Diagnostic Self-Dimming Status Light	Hot Spring Logo Badge Diagnostic Self-Dimming Status Light	Hot Spring Logo Badge Diagnostic Self-Dimming Status Light
Jet Pump 1	Wavemaster® 8200 2-Speed 2.0 HP, Continuous Duty (4.0 HP, Breakdown Torque)	Wavemaster® 9000 1-Speed 2.5 HP, Continuous Duty (5.2 HP, Breakdown Torque)	Wavemaster® 7000 1-Speed 1.65 HP, Continuous Duty (3.5 HP, Breakdown Torque)
Jet Pump 2	Wavemaster® 8000 1-Speed 2.0 HP, Continuous Duty (4.0 HP, Breakdown Torque)	N/A	N/A
Jet Pump 3	N/A	N/A	N/A
Jets	1 XL Dual Rotary Jet 3 XL Single Rotary Jets 1 XL Directional Jet 4 Standard Single Rotary Jets 4 Standard Directional Jets 28 Precision® Directional Jets	1 XL Directional Jet 2 Standard Single Rotary Jets 2 Standard Directional Jets 14 Precision® Directional Jets	1 XL Directional Jet 2 Standard Single Rotary Jets 2 Standard Directional Jets 14 Precision® Directional Jets
Controls	IQ 2020® Color LCD	IQ 2020® Color LCD	IQ 2020® Color LCD
Circulation Pump	SilentFlo 5000® Quiet Continuous Filtration	SilentFlo 5000® Quiet Continuous Filtration	SilentFlo 5000® Quiet Continuous Filtration
Heater	No-Fault® 4000w/230 V	No-Fault® 6000w/230 V	No-Fault® 1500w/115 V or 6000w/230 V
Filtration	2 Polyester 50 sq ft Filters, 100 sq ft Total Surface Area, Top-Loading	2 Polyester 50 sq ft Filters, 100 sq ft Total Surface Area, Top-Loading	2 Polyester 50 sq ft Filters, 100 sq ft Total Surface Area, Top-Loading
Water Care System	FreshWater® IQ System: Salt - Ready Smart Monitoring - Ready Dosing - Ready	FreshWater® IQ System: Salt - Ready Smart Monitoring - Ready Dosing - Ready	FreshWater® IQ System: Salt - Ready Smart Monitoring - Ready Dosing - Ready
Electrical Requirements	230 V/50 amp, 60 Hz	230 V/50 amp, 60 Hz	115 V/20amp, 60Hz, Convertible to 115 V/30amp or 230 V/50amp
GFCI Protected Sub-Panel	Included	Included	Includes 20 amp GFCI protected power cord**
Music System (Optional)	Wireless Audio System	Wireless Audio System	Wireless Audio System
Water Features	Video® Waterfall LED Backlit Ribbon	Video® Waterfall LED Backlit Ribbon	Video® Waterfall LED Backlit Ribbon

* Requires Additional 20amp Circuit Breaker. ** Excludes Canadian Models

HOT SPOT® COLLECTION

	RHYTHM®	RELAY®	PACE™
Seat Capacity	7	6	5
Dimensions <i>(Subject to Change)</i>	7'0" x 7'0" x 36" 213 cm x 213 cm x 91 cm	7'0" x 7'0" x 36" 213 cm x 213 cm x 91 cm	6'10" x 6'10" x 33" 208 cm x 208 cm x 84 cm
Jet Count	40	40	24
Water Capacity	330 g / 1250 L	340 g / 1290 L	300 g / 1135 L
Dry Weight	845 lb / 383 kg	830 lb / 375 kg	775 lb / 350 kg
Filled Weight	4820 lb / 2185 kg	4715 lb / 2140 kg	4150 lb / 1880 kg
Shell Colors	Alpine White, Pebble, Tuscan Sun, White Pearl	Alpine White, Pebble, Tuscan Sun, White Pearl	Alpine White, Pebble, Tuscan Sun, White Pearl
Cabinet Colors	Almond, Havana, Storm	Almond, Havana, Storm	Almond, Havana, Storm
Cabinet Type	Everwood® All-Weather Low-Maintenance	Everwood® All-Weather Low-Maintenance	Everwood® All-Weather Low-Maintenance
Step Type	Hot Spot Step: Almond, Havana, Storm	Hot Spot Step: Almond, Havana, Storm	Hot Spot Step: Almond, Havana, Storm
Cover Colors	Black, Chestnut, Gray	Black, Chestnut, Gray	Black, Chestnut, Gray
Cover Lifters	CoverCradle®, CoverCradle® II, Lift n'Glide®, UpRite®	CoverCradle®, CoverCradle® II, Lift n'Glide®, UpRite®	CoverCradle®, CoverCradle® II, Lift n'Glide®, UpRite®
Bottom Seal	HDPE Bottom Sheet	HDPE Bottom Sheet	HDPE Bottom Sheet
Lighting	Multi-Color LED Interior: 10 Points of Light; Exterior: 4 Corner LED	Multi-Color LED Interior: 10 Points of Light; Exterior: 4 Corner LED	Multi-Color LED Interior: 10 Points of Light; Exterior: 4 Corner LED
Logo Light	N/A	N/A	N/A
Jet Pump 1	Wavemaster® 6200 2-Speed 1.5 HP, Continuous Duty (3.2 HP, Breakdown Torque)	Wavemaster® 6200 2-Speed 1.5 HP, Continuous Duty (3.2 HP, Breakdown Torque)	Wavemaster® 6200 2-Speed 1.5 HP, Continuous Duty (3.2 HP, Breakdown Torque)
Jet Pump 2	Wavemaster® 6000 1-Speed 1.5 HP, Continuous Duty (3.2 HP, Breakdown Torque)	Wavemaster® 6000 1-Speed 1.5 HP, Continuous Duty (3.2 HP, Breakdown Torque)	N/A
Jet Pump 3	N/A	N/A	N/A
Jets	3 XL Directional Hydromassage Jets 2 XL Rotary Hydromassage Jets 3 Directional Hydromassage Jets 2 Rotary Hydromassage Jets 30 Precision® Directional Jets	3 XL Directional Hydromassage Jets 2 XL Rotary Hydromassage Jets 3 Directional Hydromassage Jets 2 Rotary Hydromassage Jets 30 Precision® Directional Jets	3 XL Directional Hydromassage Jets 2 Directional Hydromassage Jets 2 Rotary Hydromassage Jets 17 Precision® Directional Jets
Controls	IQ 2020® Mono Color LCD Panel	IQ 2020® Mono Color LCD Panel	IQ 2020® Mono Color LCD Panel
Circulation Pump	SilentFlo 5000® Quiet Continuous Filtration	SilentFlo 5000® Quiet Continuous Filtration	SilentFlo 5000® Quiet Continuous Filtration
Heater	No-Fault® 4000w/230 V	No-Fault® 4000w/230 V	No-Fault® 1000w/115 V or 4000w/230 V
Filtration	(1) Polyester 65 sq ft Filter, Top-Loading	(1) Polyester 65 sq ft Filter, Top-Loading	(1) Polyester 30 sq ft Filter, Top-Loading
Water Care System	FreshWater® IQ Salt System Ready	FreshWater® IQ Salt System Ready	FreshWater® IQ Salt System Ready
Electrical Requirements	230 V/50 amp, 60 Hz	230 V/50 amp, 60 Hz	115 V/20 amp Convertible to 115 V/30 amp or 230 V/50 amp, 60 Hz
GFCI Protected Sub-Panel	Included	Included	Includes 20 amp GFCI Protected Power Cord**
Music System (Optional)	Wireless Audio System	Wireless Audio System	Wireless Audio System
Water Features	Vidro® Waterfall	Vidro® Waterfall	Vidro® Waterfall

	STRIDE®	SX	TX
Seat Capacity	3	3	2
Dimensions <i>(Subject to Change)</i>	7'0" x 5'5" x 29" 213 cm x 165 cm x 74 cm	6'0" x 6'5" x 33" 183 cm x 196 cm x 84 cm	6'0" x 6'0" x 29" 183 cm x 183 cm x 74 cm
Jet Count	20	18	11
Water Capacity	225 g / 850 L	230 g / 870 L	190 g / 720 L
Dry Weight	570 lb / 260 kg	645 lb / 295 kg	635 lb / 290 kg
Filled Weight	2975 lb / 1350 kg	3090 lb / 1400 kg	2570 lb / 1165 kg
Shell Colors	Alpine White, Pebble, Tuscan Sun, White Pearl	Alpine White, Pebble, Tuscan Sun, White Pearl	Alpine White, Pebble, Tuscan Sun, White Pearl
Cabinet Colors	Almond, Havana, Storm	Almond, Havana, Storm	Almond, Havana, Storm
Cabinet Type	Everwood® All-Weather Low-Maintenance	Everwood® All-Weather Low-Maintenance	Everwood® All-Weather Low-Maintenance
Step Type	Hot Spot Step: Almond, Havana, Storm	Hot Spot Step: Almond, Havana, Storm	Hot Spot Step: Almond, Havana, Storm
Cover Colors	Black, Chestnut, Gray	Black, Chestnut, Gray	Black, Chestnut, Gray
Cover Lifters	CoverCradle®, CoverCradle® II, Lift n'Glide®, UpRite®	CoverCradle®, CoverCradle® II, Lift n'Glide®	Lift n'Glide®
Bottom Seal	HDPE Bottom Sheet	HDPE Bottom Sheet	HDPE Bottom Sheet
Lighting	Multi-Color LED Interior: 6 Points of Light	Multi-Color LED Interior: 6 Points of Light	Multi-Color LED Interior: 4 Points of Light
Logo Light	N/A	N/A	N/A
Jet Pump 1	Wavemaster® 6200 2-Speed 1.5 HP, Continuous Duty (3.2 HP, Breakdown Torque)	Wavemaster® 6200 2-Speed 1.5 HP, Continuous Duty (3.2 HP, Breakdown Torque)	Wavemaster® 4200 2-Speed 1.0 HP, Continuous Duty (1.7 HP, Breakdown Torque)
Jet Pump 2	N/A	N/A	N/A
Jet Pump 3	N/A	N/A	N/A
Jets	1 XL Directional Hydromassage Jet 1 XL Rotary Hydromassage Jet 3 Directional Hydromassage Jets 1 Rotary Hydromassage Jet 14 Precision® Directional Jets	1 Moto-Massage® Jet 1 XL Rotary Hydromassage Jet 16 Precision® Directional Jets	1 Moto-Massage® Jet 1 Directional Hydromassage Jet 1 Rotary Hydromassage Jet 8 Precision® Directional Jets
Controls	IQ 2020® Mono Color LCD Panel	IQ 2020® Mono Color LCD Panel	IQ 2020® Mono Color LCD Panel
Circulation Pump	SilentFlo 5000® Quiet Continuous Filtration	SilentFlo 5000® Quiet Continuous Filtration	SilentFlo 5000® Quiet Continuous Filtration
Heater	No-Fault® 1000w/115 V or 4000w/230 V	No-Fault® 1000w/115 V or 4000w/230 V	No-Fault® 1000w/115 V or 4000w/230 V
Filtration	(1) Polyester 30 sq ft Filter, Top-Loading	(1) Polyester 30 sq ft Filter, Top-Loading	(1) Polyester 30 sq ft Filter, Top-Loading
Water Care System	FreshWater® IQ Salt System Ready	FreshWater® IQ Salt System Ready	FreshWater® IQ Salt System Ready
Electrical Requirements	115 V/20 amp Convertible to 115 V/30 amp or 230 V/50 amp, 60 Hz	115 V/20 amp Convertible to 115 V/30 amp or 230 V/50 amp, 60 Hz	115 V/15 amp Convertible to 115 V/30 amp or 230 V/50 amp, 60 Hz
GFCI Protected Sub-Panel	Includes 20 amp GFCI Protected Power Cord**	Includes 20 amp GFCI Protected Power Cord**	Includes 20 amp GFCI Protected Power Cord**
Music System (Optional)	N/A	N/A	N/A
Water Features	N/A	N/A	N/A

** Excludes Canadian Models

FREEFLOW® COLLECTION

	MONTEREY™	EXCURSION®	AZURE™
Seat Capacity	5	4	4
Dimensions <i>(Subject to Change)</i>	6'6" x 6'6" x 34" 198 cm x 198 cm x 86 cm	6'6" x 6'6" x 34" 198 cm x 198 cm x 86 cm	5'7" x 6'7" x 33" 170 cm x 201 cm x 84 cm
Jet Count	40	33	25
Water Capacity	265 g / 1025 L	250 g / 950 L	235 g / 900 L
Dry Weight	425 lb / 195 kg	390 lb / 175 kg	360 lb / 165 kg
Filled Weight	3515 lb / 1620 kg	3175 lb / 1445 kg	3020 lb / 1385 kg
Color	Smoke, Dune	Smoke, Dune	Smoke, Dune
Cabinet Pattern	Diamond Weave, Mosaic	Diamond Weave, Mosaic	Diamond Weave, Mosaic
Step Type	Straight Roto, Brown or Gray	Straight Roto, Brown or Gray	Straight Roto, Brown or Gray
WeatherPro™ Cover	Gray, Cocoa 2.5" to 4.0" tapered, 1lb. density foam core	Gray, Cocoa 2.5" to 4.0" tapered, 1lb. density foam core	Gray, Cocoa 2.5" to 4.0" tapered, 1lb. density foam core
Cover Lifters	Low Mount, Cover Rx	Low Mount, Cover Rx	Cover Rx
Lighting	Footwell Multi-Color Light, 2 External Lights	Footwell Multi-Color Light, 2 External Lights	Footwell Multi-Color Light, 2 External Lights
Jet Pump	2-Speed 1.5HP	2-Speed 1.5HP	2-Speed 1.5HP
Jets	8 Ultra Mini Jets 26 Mini Jets 6 Twin Pulse Jets	8 Ultra Mini Jets 21 Mini Jets 4 Twin Pulse Jets	8 Ultra Mini Jets 13 Mini Jets 4 Twin Pulse Jets
Controls	LCD Screen	LCD Screen	LCD Screen
Heater	1kw/115 V; 4kw/230 V	1kw/115 V; 4kw/230 V	1kw/115 V; 4kw/230 V
Filtration	50 sq ft Filter	50 sq ft Filter	50 sq ft Filter
Water Care System	FROG® Cartridge Ready* Ozone Optional***	FROG® Cartridge Ready* Ozone Optional***	FROG® Cartridge Ready* Ozone Optional***
Electrical Requirements	115 V Plug-N-Play includes GFCI power cord / 230 V convertible**	115 V Plug-N-Play includes GFCI power cord / 230 V convertible**	115 V Plug-N-Play includes GFCI power cord / 230 V convertible**
Water Features	Waterfall	Waterfall	Waterfall

	APTOS™	MINI™
Seat Capacity	5	2
Dimensions <i>(Subject to Change)</i>	6'6" Diameter x 33" 198 cm Diameter x 84 cm	6' x 4'5" x 29" 183 cm x 135 cm x 74 cm
Jet Count	21	11
Water Capacity	265 g / 1025 L	125 g / 475 L
Dry Weight	360 lb / 165 kg	260 lb / 120 kg
Filled Weight	3450 lb / 1590 kg	1655 lb / 755 kg
Color	Smoke, Dune	Smoke, Dune
Cabinet Pattern	Espresso, Coastal Gray	Diamond Weave, Mosaic
Step Type	Curved Roto, Brown or Gray	Straight Roto, Brown or Gray
WeatherPro™ Cover	Gray, Cocoa 2.5" to 4.0" tapered, 1lb. density foam core	Gray, Cocoa 2.5" to 4.0" tapered, 1lb. density foam core
Cover Lifters	Low Mount, Cover Rx	Cover Rx
Lighting	Footwell Multi-Color Light	Footwell Multi-Color Light
Jet Pump	2-Speed 1.5HP	2-Speed 1.5HP
Jets	18 Mini Jets 2 Twin Pulse Jets 1 Turbo Whirlpool	6 Mini Jets 5 Twin Pulse Jets
Controls	LCD Screen	LCD Screen
Heater	1kw/115 V; 4kw/230 V	1kw/115 V; 4kw/230 V
Filtration	50 sq ft Filter	25 sq ft Filter
Water Care System	FROG® Cartridge Ready** Ozone Standard	FROG® Cartridge Ready** Ozone Optional***
Electrical Requirements	115 V Plug-N-Play includes GFCI power cord / 230 V convertible**	115 V Plug-N-Play includes GFCI power cord / 230 V convertible**
Water Features	Whirlpool Jet	N/A

COLD PLUNGE

	VIGOR™
Seat Capacity	1
Dimensions <i>(Subject to Change)</i>	7'4" x 3'6" x 29" 224 cm x 107 cm x 74 cm
Water Temperature	As low as 40°F (4°C)
Water Capacity	110 g / 425 L
Dry Weight	365 lb / 165 kg
Filled Weight	1460 lb / 670 kg
Shell Color	Alpine White
Cabinet Colors	Ash, Mocha
Cover Colors	Gray, Storm
Cover Lifter	Cover RX
Bottom Seal	HDPE Sheet
Lighting	Multi-Color LED Underwater Light
Insulation	Multi-Density, Closed Cell Polyurethane Foam Fill
Custom-Fit Insulated Cover	WeatherPro™ Tapered Core with Hinge Seal
Controls	LCD Screen
Circulation Pump	SilentFlo 5000® Quiet Continuous Circulation Pump
Heat Pump	Quiet < 50dBA, Variable Speed Compressor for Efficient Operation
Filtration	25 sq ft
Water Care System	UV-C Sanitization System
Electrical Requirements	Plug-N-Play 115 v / 15 amp with GFCI cord
GFCI Protected Sub-Panel	Includes 20 amp GFCI Protected Power Cord (Excludes Canadian Models)

* FROG®@ease® products are only available in the U.S. For Canada, FROG® Serene® Bromine is available.

** Sub-panel not included.

*** Dealer installed at time of purchase.

A WARRANTY YOU CAN COUNT ON

We are passionate about making the world's best hot tubs and cold plunges. We stand behind them with robust and comprehensive warranties designed to give you peace of mind. Our warranties are our commitment to you, and we are proud to share them up front and in detail.

	Highlife® Collection	Limelight® Collection	Hot Spot® Collection	Freeflow® Collection	Cold Plunge
No-Leak Shell	7 Years	7 Years	5 Years	5 Years	5 Years
Shell Surface	7 Years	5 Years	2 Years	5 Years	5 Years
Cabinet	5 Years	5 Years	2 Years	2 Years	3 Years
No-Leak Plumbing	5 Years	5 Years	2 Years	1 Year	3 Years
No-Fault® Heater	5 Years	5 Years	2 Years	—	—
Heat Pump	—	—	—	—	3 Years
Component Warranty	5 Years	5 Years	2 Years	1 Year	3 Years
Light Assembly	2 Years	3 Years	2 Years Interior 1 Year Exterior	—	2 Years
Covers	2 Years	2 Years	2 Years	2 Years	2 Years

www.hotspring.com/warranty

"We bought our hot tub before Christmas and we use it every night! It feels awesome and it has improved our overall sleep quality. Highly recommend to anyone wanting to improve their sleep quality and general over all wellness."

— Flash™ Owner, Fennimore, WI

Compare Spa Collections

Benefit	Features	Highlife® Collection	Limelight® Collection	Hot Spot® Collection	Freeflow® Collection
Massage	Moto-Massage® DX	●	—	—	—
	Moto-Massage	—	—	SX & TX	—
	Comfort Control®	●	●	●	—
	SmartJet® System	●	●	Pace™	—
Clean Water	100% No-Bypass Filtration	●	—	—	—
	Tri-X® Filters	●	—	—	—
	Dual-Action Filtration	—	●	—	—
	FreshWater® Salt System	●	Optional	Optional	—
	FreshWater® Smart Monitoring System	Optional	Optional	—	—
	FreshWater® Smart Dosing System	Optional	Optional	—	—
	FROG® Sanitizing System	—	—	—	Optional
	Multiple Layers of High Density Foam Insulation	●	—	—	—
	FiberCor® Insulation	—	●	●	—
	Polymeric Base Pan and Substructure	●	—	—	—
Energy Efficiency	Polyethylene Sealed Bottom	—	●	●	—
	SilentFlo 5000® Circulation Pump	●	●	●	—
	Patented Pump Shroud	●	●	●	—
	No-Fault® Heater	●	●	●	—
	Custom-Fit Insulated Cover	●	●	●	●
	Meets CEC and APSP Energy Efficiency Standards	●	●	●	●
Intuitive Control	Plug-N-Play	—	—	4 Models	●
	Color LCD Touchscreen Control	●	—	—	—
	Color LCD Control	—	●	—	—
	LCD Control	—	—	●	●
Lighting & Entertainment	Diagnostic Logo Light	●	●	—	—
	Customizable LED Zone Lighting	●	—	—	—
	Multi-Color LED Lighting	●	●	●	●
	Exterior Lighting	●	●	All except SX & TX	All except Aptos & Mini
	Wireless Entertainment	Optional	Optional	Optional except Stride®, SX, TX	—

*Check with local dealer for availability.

Community

Join our community of Hot Spring® spa and cold plunge owners for ideas, perspectives, personal results, and more. Connect with our social channels and immerse yourself in our world.

Visit our website:
hotspring.com

Follow us on social media:

- f @HotSpringSpas
- 📷 @hotspring_spas
- 📌 /hotspringspas
- ✂ @HotSpringSpas
- 🎵 @hotspringspas



© 2026 Watkins Wellness, 1280 Park Center Drive, Vista, California 92081. All rights reserved. Specifications, colors, and surface materials subject to change without notice. Not all features available on all products. Printed in USA. Aptos™, Aria®, Azure™, BellaFontana® water feature, Beam™, Clean Screen®, ComfortControl® System, CoverCradle®, CoolZone™, EnergySmart® Spa, Envoy®, EverFresh®, Everwood™ Cabinet, Every Day Made Better®, Excursion®, Feel good. Live Well.®, FiberCor®, Flair®, Flash™, Freeflow®, FreshWater®, FreshWater, FRESHWATER®, Grandee, HighLife®, Hot Spot®, Hot Spring®, HotSpring®, HydroPulse®, HydroStream® jet, IQ 2020®, I'm a Hot Tubber®, Jetsetter®, JetStream® jet, Lift 'n Glide®, Limelight®, Luminescence LED Light System, Mini™, Monterey™, Moto-Massage® jet, Necessaries®, Nobody Backs You Better®, No-Fault®, Pace™, Precision® jet, Prism®, Prodigy®, Pulse®, Raio®, Relay®, Rhythm®, Silent Flo 5000®, SmartJet® System, SoothingStream® water feature, Sovereign®, Stride®, The Absolute Best Hot Tub Ownership Experience®, Triumph®, Tri-X® filter, UpRite®, Vanguard®, Vanishing Act®, Vidro®, Vigor™, Vista®, Watkins the Home Relaxation Specialists™, Watkins Direct™, WaveMaster®, Watkins Wellness®, WeatherPro®, Virtual View™ are trademarks of Watkins Manufacturing Corp.



We print our brochures on only Forest Stewardship Council (FSC) paper. Printed in the USA on recycled paper that contains 10% post-consumer waste and is FSC certified. FSC ensures that the paper in our brochures contains fiber from well-managed and responsibly harvested forests. Please pass this catalog on or recycle again.

